



# ITA\_User Instruction Manual

Export/Import

—Version 1.11 —

## Disclaimer

All the contents of this document are protected by copyright owned by NEC Corporation.

Unauthorized reproduction or copying of all or part of the contents of this document is prohibited.

The contents of this document are subject to change without prior notice in the future.

NEC Corporation is not responsible for any technical or editorial errors or omissions in this document.

NEC Corporation do not guarantee accuracy, usability, certainty of the content in this document.

## Trademark

- Linux is registered trademark or trademark of Linux Torvalds, registered in the U.S. and other countries.
- Red Hat is registered trademark or trademark of Red Hat, Inc. Registered in the U.S. and other countries.
- Apache, Apache Tomcat, and Tomcat are registered trademarks or trademarks of the Apache Software Foundation.
- Ansible is registered trademark or trademark of Red Hat, Inc.
- AnsibleTower is registered trademark or trademark of Red Hat, Inc.

The names of other systems, company name and products mentioned in this document are registered trademarks or trademarks of their respective companies.

The® mark and TM mark are not specified in this document.

※ 「Exastro IT Automation」 is written as “ITA” in this document.

# Table of Contents

Introduction .....	3
1 Export/Import overview .....	4
1.1 Export/Import function.....	4
1.1.1 Functions .....	4
1.1.2 Modes .....	5
1.1.3 Example.....	6
1.2 Excel bulk export/import .....	8
1.2.1 Function.....	8
2 Menu and screen configuration of Export/Import.....	9
2.1 Menu List.....	9
3 Function and operation method .....	10
3.1 Export Menu.....	10
3.2 Import menu .....	12
3.3 Export/Import menu list .....	14
3.4 Excel bulk export.....	15
3.5 Excel bulk import.....	18
3.6 Excel bulk export•Import list.....	20

## Introduction

---

This manual explains about the ITA Export/Import function.

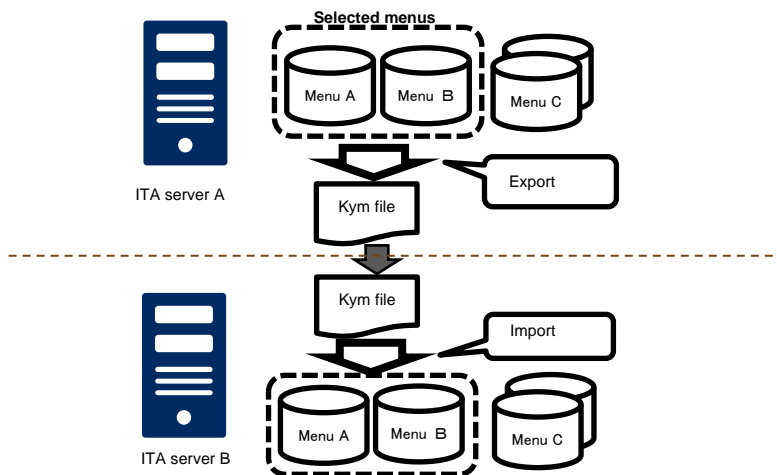
# 1 Export/Import overview

This chapter will explain the Export/Import function, its modes, as well as show some examples.

## 1.1 Export/Import function

### 1.1.1 Functions

To Export/Import, select the menu you want to move and then transfer them by overwriting the data as menu units.

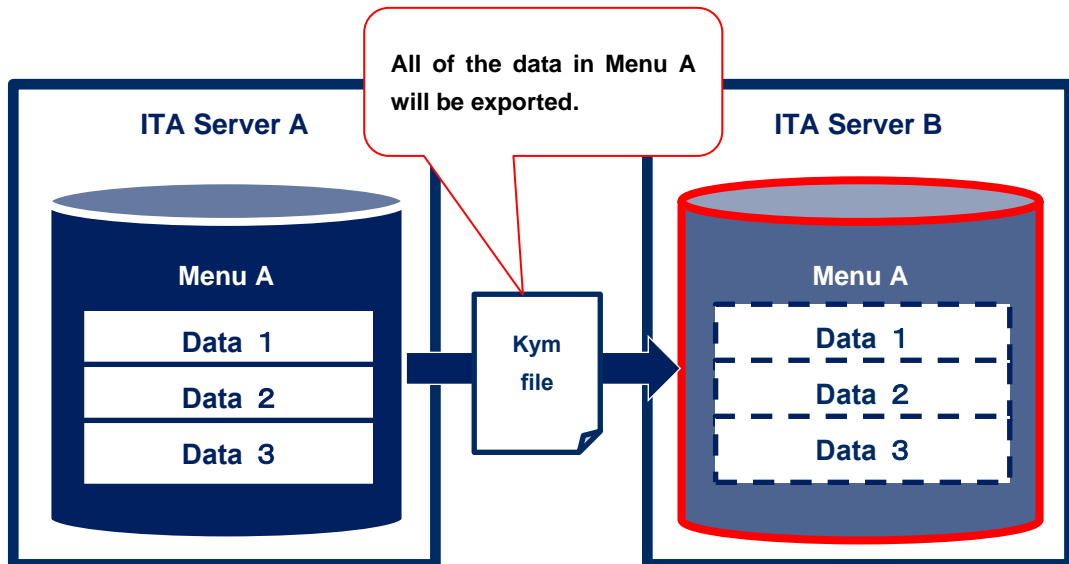


### 1.1.2 Modes

The export function consists of 2 modes.

#### 1. Environment migration

Exports all the data of the selected menus. It will overwrite all the data of the Import destination.

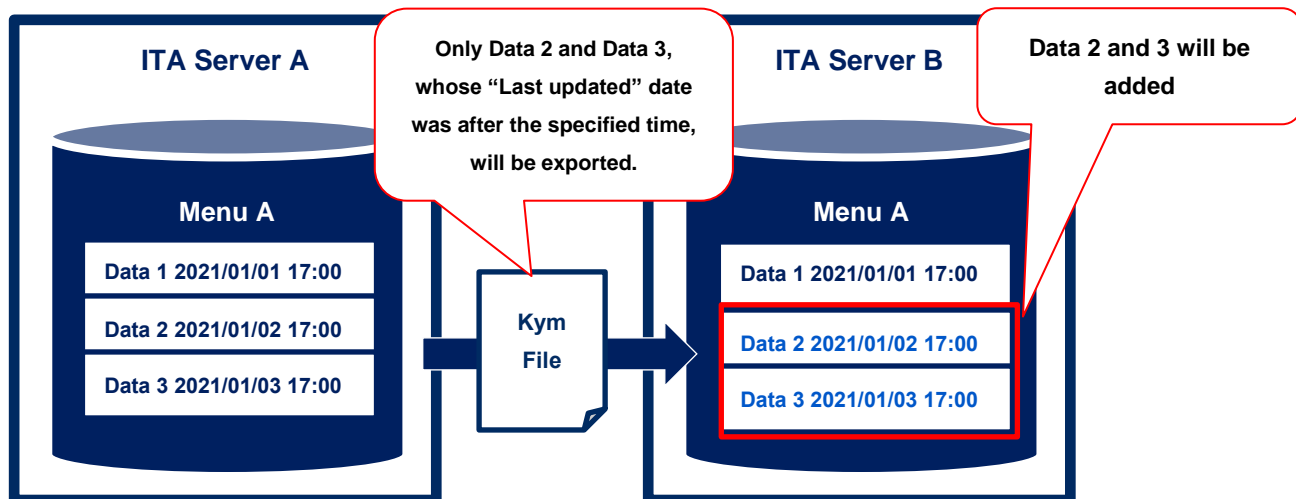


#### 2. Time specification

Exports only data last updated after a specified time.

If the unique items (ID, No, etc.) overlap, the exported data will take priority over the imported data.

Example: If the following date/time is set: 2021/01/02 17:00



### 1.1.3 Example

This example assumes that two environments, ITA Server A and ITA Server B, will be used for the function.

#### Pattern ①: Replicating the environment

All the data registered to ITA Server A will be replicated onto ITA Server B.

##### Procedure

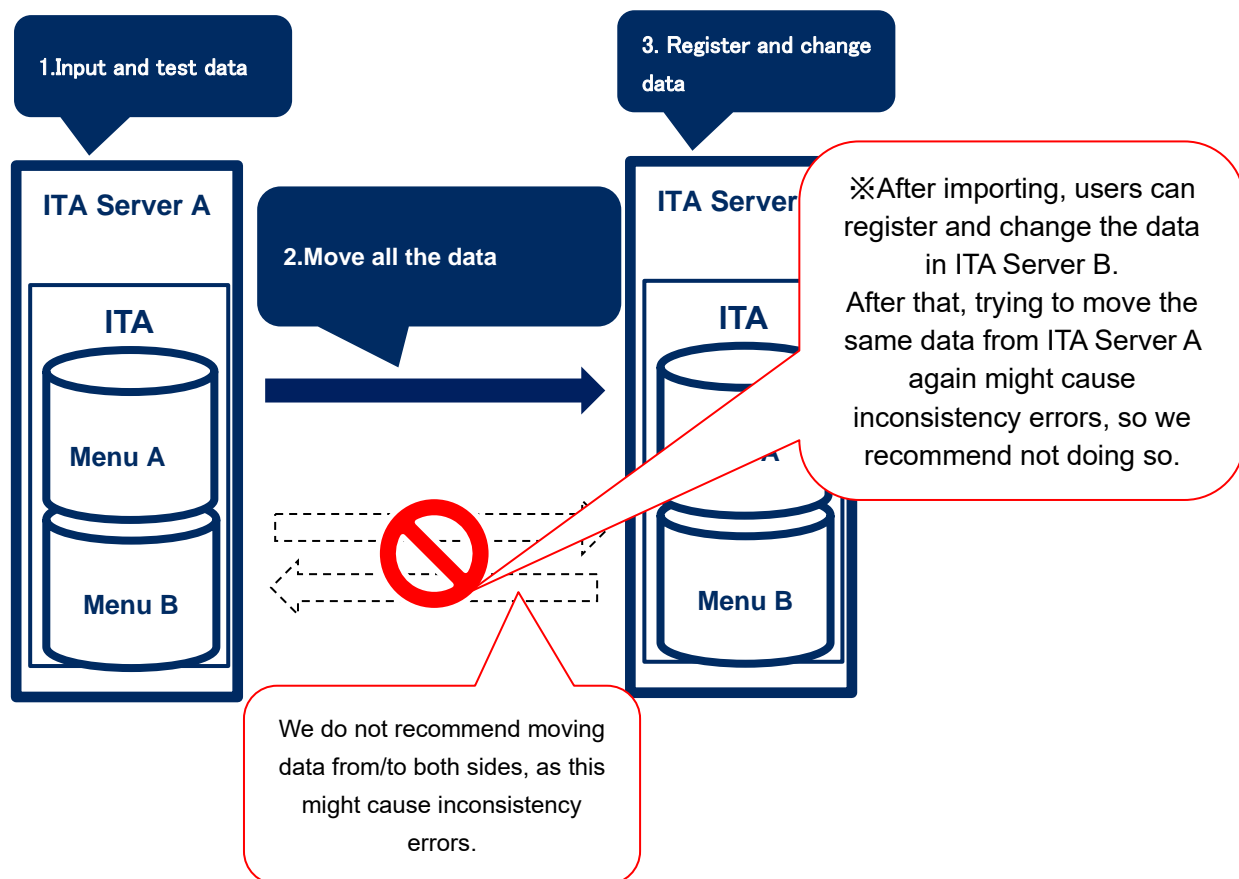
1. Export all of the data in ITA Server A in using the Environment Migration mode.

2. Take the exported data from step 1 and import it to ITA Server B.

※After importing, users can register and change the data in ITA Server B.

After that, trying to move the same data from ITA Server A again might cause inconsistency errors, so we recommend not doing so.

※We do not recommend moving data from/to both sides, as this might cause inconsistency errors.



## Pattern ② Separate Data input server and Executing server.

If you want to have 2 servers. 1 server for data entry and testing and 1 for executing operations.

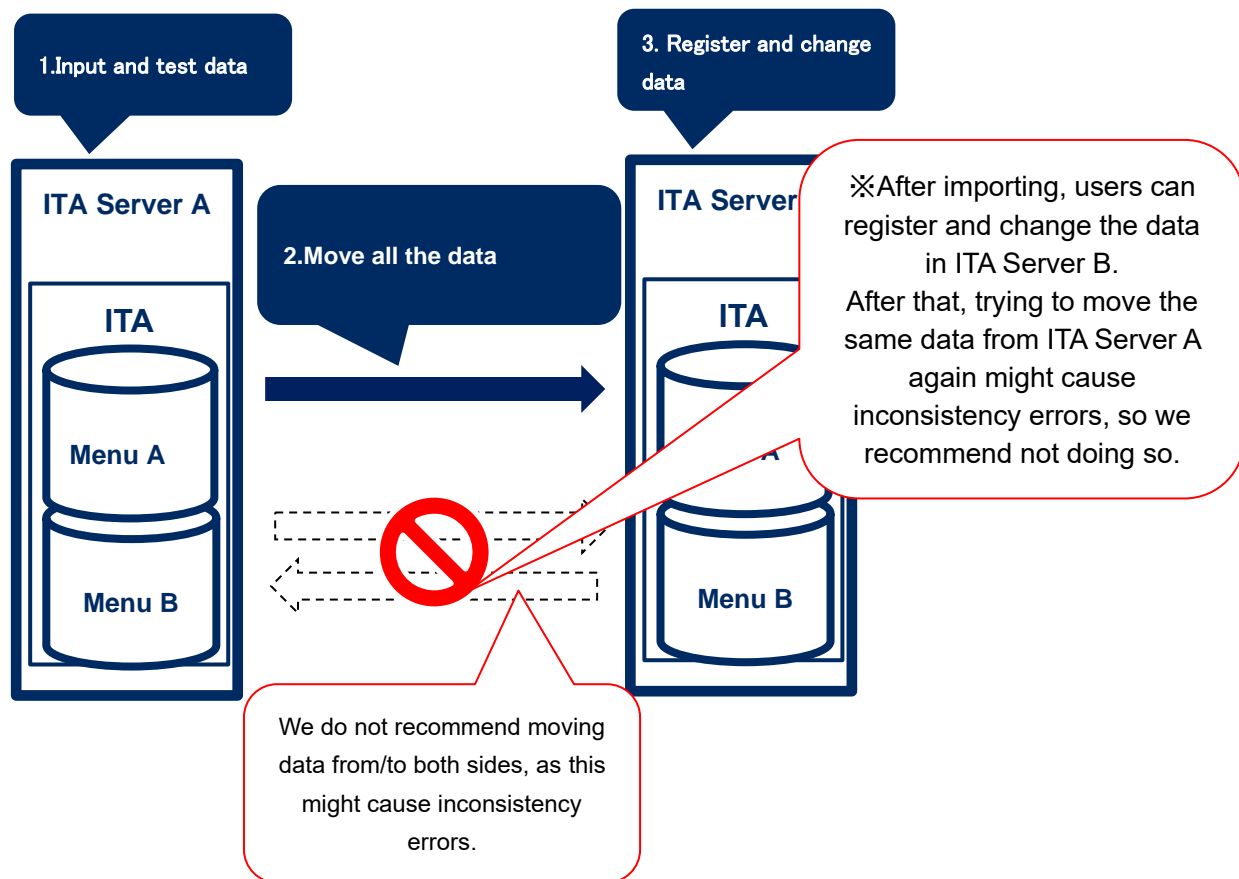
### Procedure

1. Export all of the data in ITA Server A in using the Environment Migration mode.
2. Take the exported data from step 1 and import it to ITA Server B.
3. Whenever there data in ITA Server A changes, use the Time Specification mode to import any changed data to server B.

※If you already know that you are going to move data multiple times, Registering/Changing the data is not recommended, as it might cause inconsistency issues. However, executing operations has not effects.

※When moving data while an operation is running on Server B, make sure to use the Time specification to move only the data that as changed in order to prevent the import having any effect on the running operation.

※We do not recommend moving data from/to both sides, as this might cause inconsistency errors.





## **1.2 Excel bulk export/import**

### **1.2.1 Function**

The Excel bulk export/import allows users to use the downloadable menu files (Excel or CSV) and export/import them as zip files.

For information regarding what files are downloadable, please see "Exastro-ITA\_User\_Instruction\_Manual\_Basic\_console"

Only menus that the user has permission to see or maintain can be exported.

Only menus that the user has permission to maintain can be imported.

## 2 Menu and screen configuration of Export/Import

---

This chapter explains the Export/Import function menu and screen configuration.

### 2.1 Menu List

The Export/Import menus are as follows.

**Table 2-1 ITA Menu list**

No	Menu group	Menu / Screen	Description
1	Export/Import	Export menu	Exports menu data.
2		Import menu	Imports menu data.
3		Export/Import menu list	Manages the status of the exports executed in [Export menu] and imports executed in [Import menu].
4		Excel bulk export	Takes downloadable data and compresses it into a zip file and exports it.
5		Excel bulk import	Imports data compressed in zip files.
6		Excel bulk export/import list	Manages the status of exports executed in [Excel bulk export] and imports executed in [Excel bulk import].

### 3 Function and operation method

#### 3.1 Export Menu

Export data registered in the ITA system in each menu.

※When moving data to another ITA environment, the integrity of data may corrupt if the whole menu is not moved together.

※ Some menus cannot be imported/exported. See the following table.

No	Menu group	Menu	No	Menu group	Menu
1	Management	Sequence list	25	Compare	Execute comparison
2	console	Version information	26	Ansible-Legacy	Execute
3	Basic console	ER diagram	27		Operation confirmation
4	Export/Import	Menu export	28		Operation list
5		Menu import	29	Ansible-Pioneer	Execute
6		Menu export/import list	30		Operation confirmation
7		Excel bulk export	31		Operation list
8		Excel bulk import	32	Ansible-LegacyRole	Execute
9		Excel bulk export/import list	33		Operation confirmation
10	Symphony	Movement instance list	34		Operation list
11		Symphony class edit	35	Terraform	Execute
12		Symphony execution	36		Operation confirmation
13		Symphony confirmation	37		Operation list
14		Symphony list	38		Link terraform list
15	Conductor	Conductor execution	39	Terraform-CLI	Execute
16		Conductor confirmation	40		Operation confirmation
17		Conductor list	41		Operation list
18		Conductor instance list			
19		Node instance list			
20	Menu create	Menu define/create			
21		Menu create execution			
22		Menu creation history			
23		Select 1			
24		Select 2			

- (1) Select the mode and abolition data to export  
List of Modes and Abolition data are displayed below.

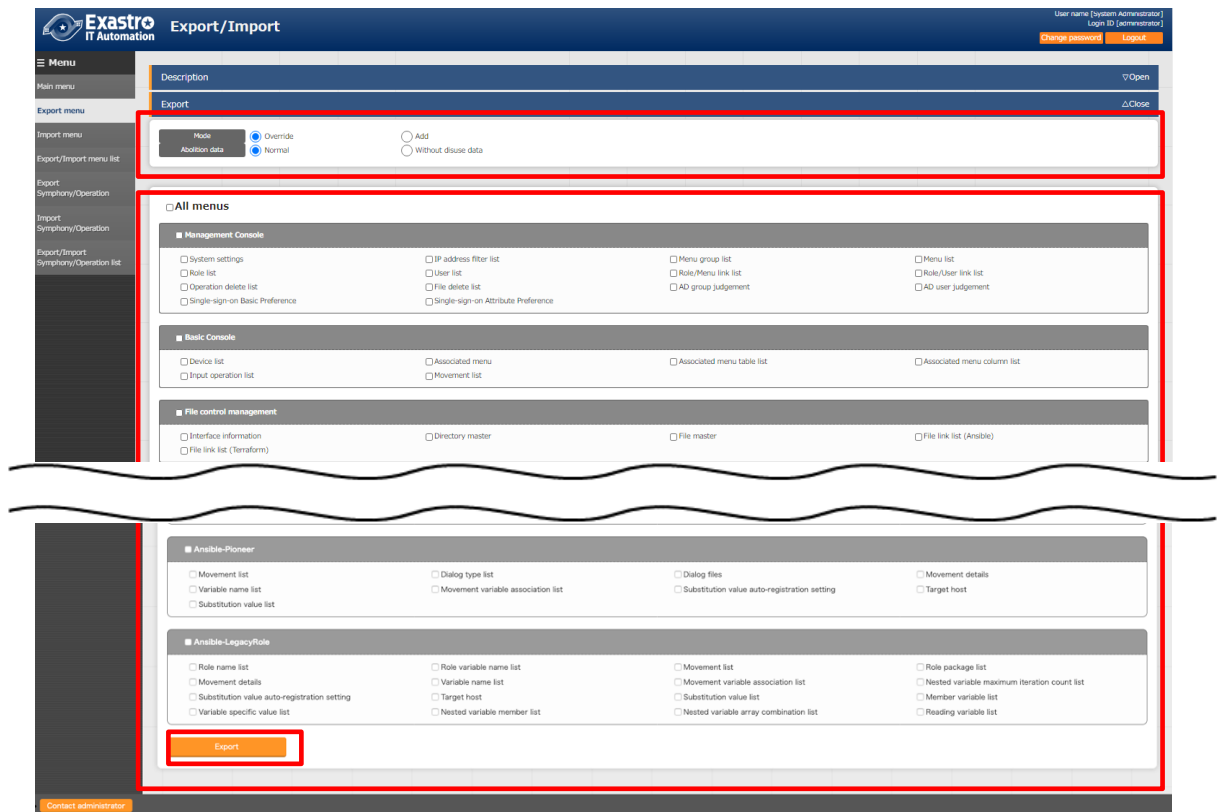
Table 3-1 Mode list

Name	Description
Overwrite	All existing data will be deleted and overwritten during import.
Postscript	Only data different to the existing data will be added during import. If the unique key (ID, No. etc) is duplicated, the existing data will keep its priority.

**Table 3-2 Abolition data list**

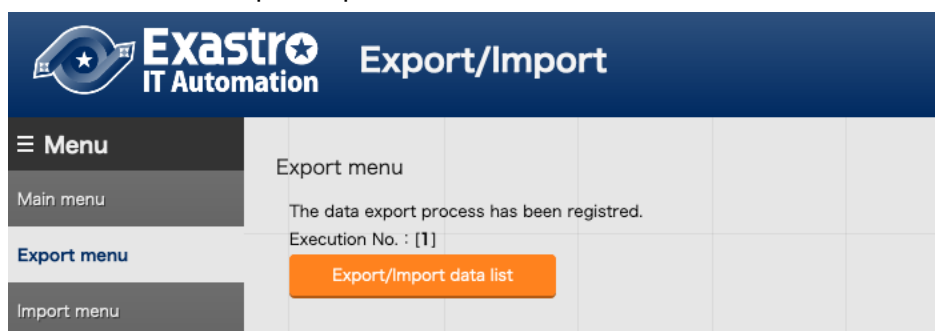
Name	Description
Normal	Export all normal data.
Without disuse data	Export without disuse data.

- (2) Select the menu to export



**Figure 3-1 Export menu screen (1)**

- (3) Click the export button after selecting the menu.  
The execution number of export operation is displayed, so please check the status of execution in the "Export/Import menu list" screen.



**Figure 3-2 Export menu screen (2)**

## 3.2 Import menu

Import the data exported in [Export menu] menu.

- (1) Select the file to be imported then click the [Upload] button.

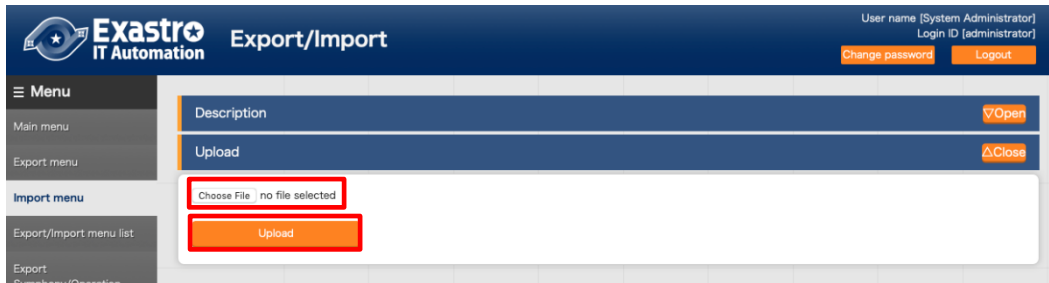


Figure 3-3 Menu import screen (1)

- (2) The list of the menu in the imported file is displayed. Select the menu to import then click the [Import] button. Please click [Import (without discarded data)] to import the menu without discarded data.

The menu whose checkbox is checked will be imported.

Please uncheck the menus that are not needed to be imported.

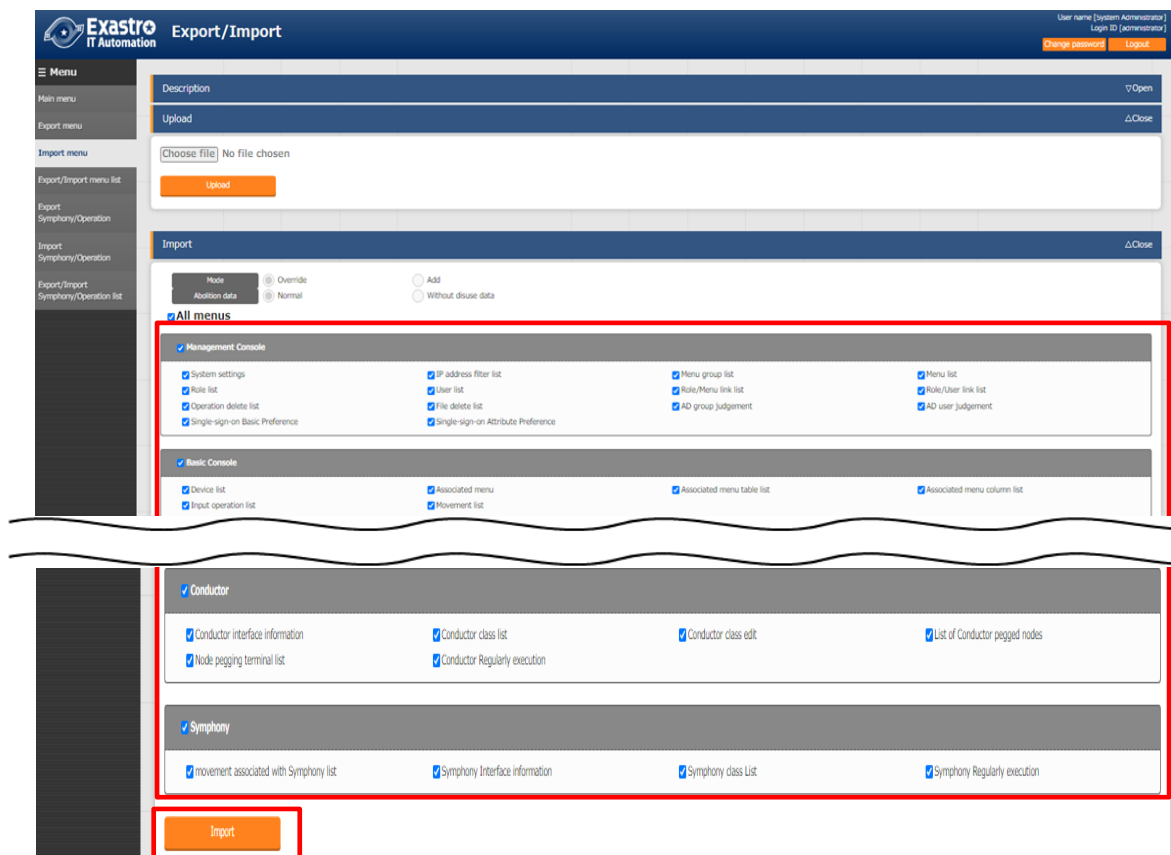


Figure 3-4 Import menu screen(2)

- (3) Move to the registration menu. Users can check the status of the migration in the [Export/Import menu list] by clicking the [Export/Import data list] button.

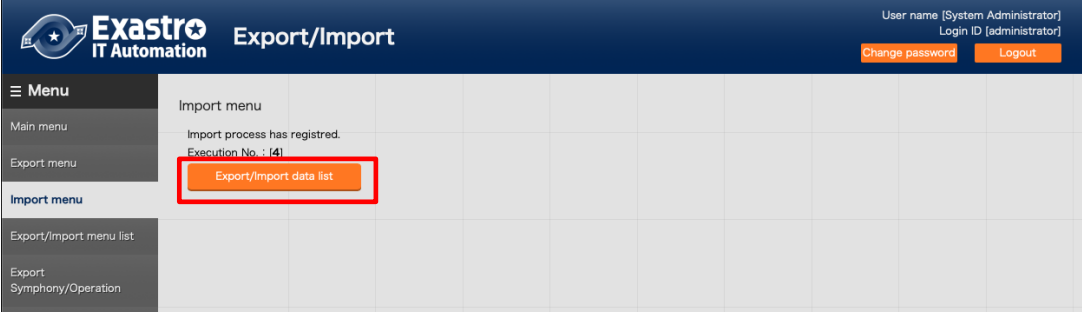


Figure 3-5 Menu import screen(3)

### 3.3 Export/Import menu list.

This menu manages any exports and imports executed in their respective menus as well as their status and data. Only data from exports/imports that the logged in user executed will be displayed..

**Exastro IT Automation** Export/Import

User name [System Administrator]  
Login ID [administrator]  
[Change password](#) [Logout](#)

**Menu**

- Main menu
- Export menu
- Import menu
- Export/Import menu list**
  - Export Symphony/Operation
  - Import Symphony/Operation
  - Export/Import Symphony/Operation list

**Description** ▽Open

**Display filter** △Close

Discard: Exclude discarded records ▼

Execution No.: ~ ▼ Search from pulldown

Status: ▼ Search from pulldown

Execution type: ▼ Search from pulldown

Mode: ▼ Search from pulldown

Abolition data: ▼ Search from pulldown

Last update date/time: ~ ▼ Search from pulldown

Last updated by: ▼ Search from pulldown

[Filter](#) [Clear filter](#)

☒ Auto-filter

**List** △Close

Execution No.	Status	Execution type	Mode	Abolition data	File name	Access permission	Last update date/time	Last updated by
						Role to allow access		
1	Completed	Export	Override	Normal	<a href="#">ita_expordata_20210127140446.kvm</a>		2021/01/27 14:04:46	Data portability procedure

Filter result count: 1

**Figure 3-6 Export/Import menu list**

**Table 3-3 List screen item list (Export/Import menu list)**

Item	Description
Execution No.	Auto generated unique number.
Status	Changes in the order of "Unexecuted", "Executing", "Completed". If error occurred during execution, the status will become "Completed (error)".
Execution type	Export...Export menu Import...Import menu
Mode	"Overwrite" or "Postscript" will be displayed.
Abolition data	"Normal" or "Without disuse data" will be displayed.
File name	If the export status says "Completed", the exported data will be displayed in the "File name" column. The file can then be downloaded for further use. Imported data will be displayed in the "File name" column.
Execution user	Displays the user that started the export/import process. The item "Execution user" is added when updated from version 1.7.2 to 1.8.0. Data is only displayed if the "Execution user" field is blank or if the logged in user is the execution user.

### 3.4 Excel bulk export

Collects downloadable data from the different menus and exports them as a zip file.

- (1) Choose what abolished data the user is exporting.  
The abolished information list is as following.

**Table 3-1 Abolished information list**

名称	Description
All records	Exports all data
Exclude abolished data	Exports all data excluding abolished data.
Abolished data only	Exports only abolished data。



- (2) Select what menus to export  
Data only the user has permission to see or maintain can be exported.

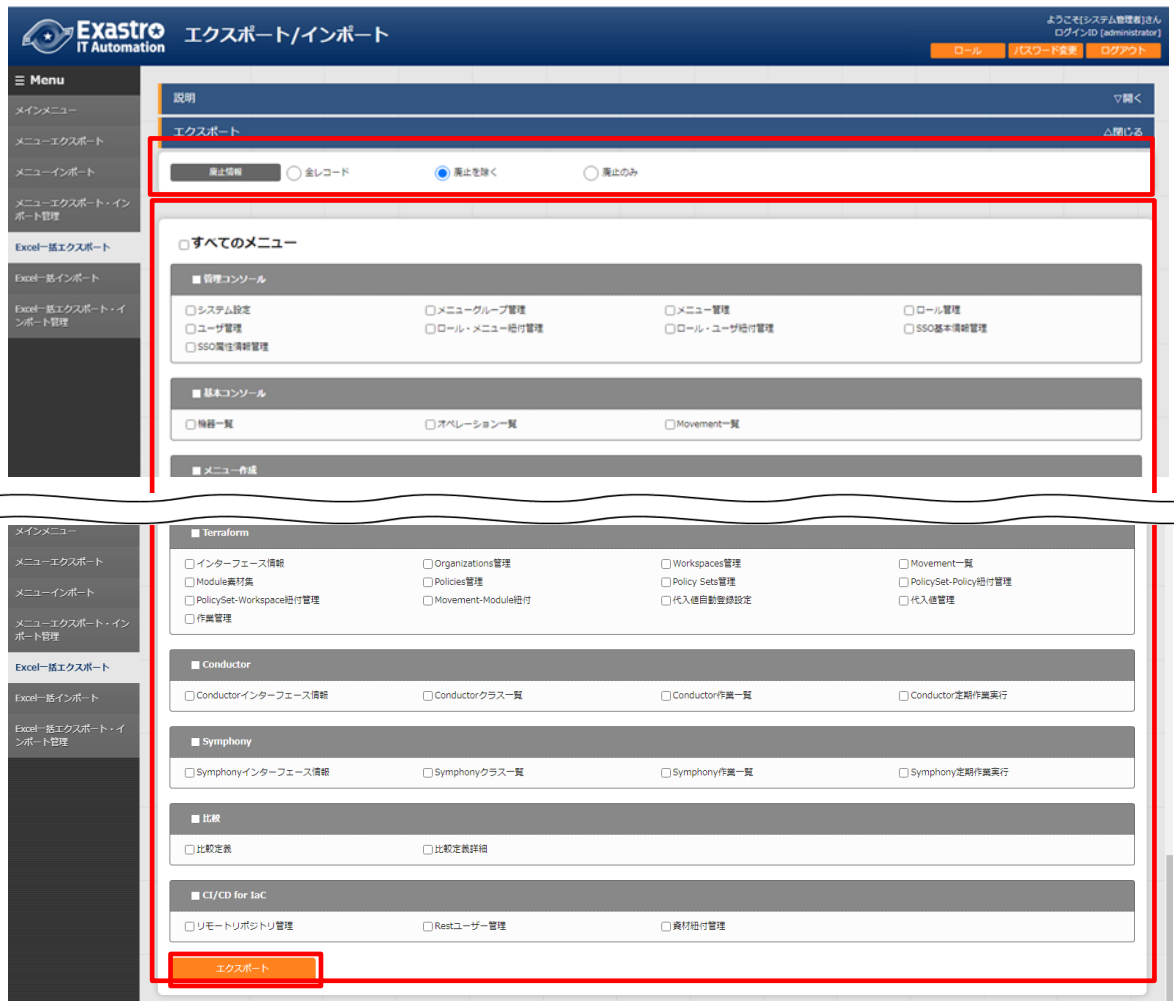


Figure 3-1 Excel bulk export screen(1)

- (3) After selecting which menus to export, press the “Export” button.  
The export process’ execution number will be displayed. Use this number to see the status of the process in the “Excel bulk export/import list” menu.

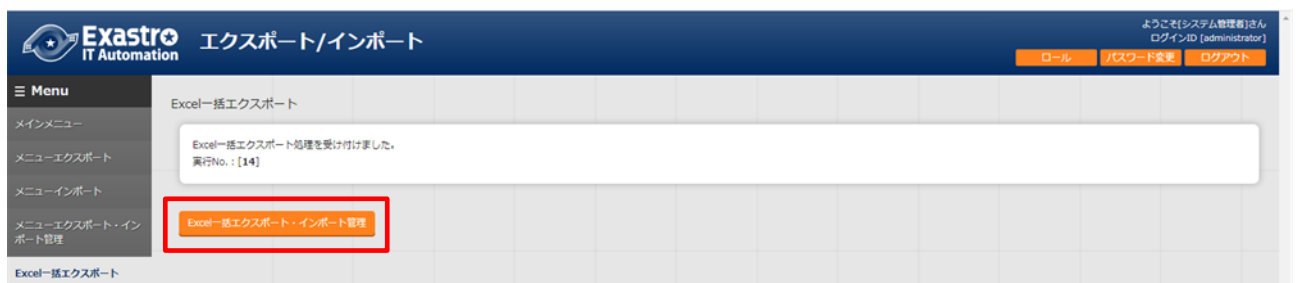


Figure 3-2 Excel bulk exportscreen(2)

- (4) The contents of export files are as displayed below  
File configuration

ITA\_FILES\_YYYYMMDDhhmmss.zip ...①  
└ MENU\_LIST.txt ...②

└─ 2100000002_Basic console ...③
└─ user list_20210708235958.xlsx ...④
└─ menu list_20210708235959.xlsx ...④
└─ 2100000003_Basic console
└─ Device list_20210708235858.scsv ...④
└─ Device list_20210708235859.xlsx ...⑤
└─ editBaker ...⑥

No	Name	Type	Description
①	File name	File	The file name is: "ITA_FILES_YYYYMMDDhhmmss.zip"
②	MENU_LIST.txt	txt	List of menu ids and file names.
③	Menu group folder	Folder	One folder is created per menu group. The name of the folder is "Menu group ID_Menu group name"]" The folder name will only contain the first 200 letters of the menu name.
④	Download file	xlsx/scsv	Output in either excel format or in CSV format. (If the number of menus exceeds the "Excel maximum line number" in the "Menu list", the file will be input in CSV format.) The files will be put under the file's respective menu group folder.
⑤	Proprietary format editing Excel creation materials	xlsx	Materials used when editing CSV files. Will only be output if the output files are in CSV format.
⑥	editBaker	Folder	Excel creation tool used to edit proprietary files. Will only be output if the output files are in CSV format.

### 3.5 Excel bulk import

Edit the data exported in the “Excel bulk export” menu and import it.

#### ① Edit zip file

##### (1) Create a list over the menus to import.

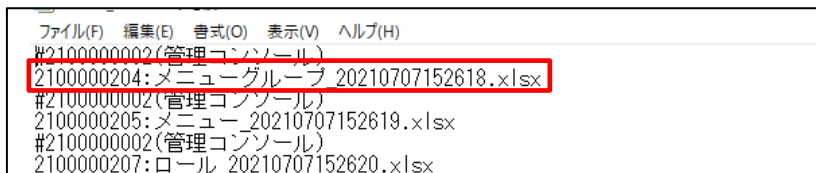
Users can edit the MENU\_LIST within the export file in order to edit what menus to import.

The MENU\_LIST.txt file includes the Menu ID and file names selected when the file was exported.

Input a “#” mark in front of the line in order to comment it out.

The name will be in the following format

Menu ID: File name



```
ファイル(F) 編集(E) 書式(O) 表示(V) ヘルプ(H)
#2100000002(管理コンソール)
2100000204:メニューグループ_20210707152618.xlsx
#2100000002(管理コンソール)
2100000205:メニュー_20210707152619.xlsx
#2100000002(管理コンソール)
2100000207:ロール_20210707152620.xlsx
```

Figure 3-3 MENU\_LIST.txt

※Users can also select what menus to import in the “Excel bulk import menu”.

##### (2) Edit the import file (Excel or CSV format)

##### (3) Compress the edited files.

The following files are required in order to import.

- MENU\_LIST.txt
- Import file (Excel or CSV format)

#### ② Import process

Press the "Select file" button and upload the zip file to import.

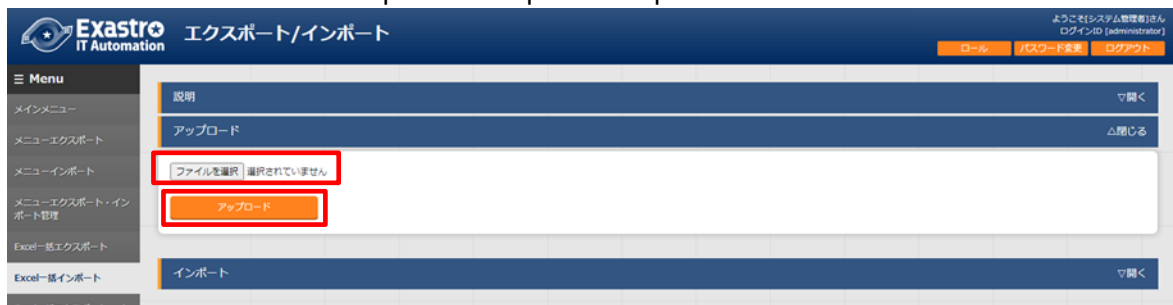


Figure 3-4 Excel bulk import screen(1)

The menus within the import file will be displayed in a list. Select which menus to import and press the "Import" button.

All menus with their checkbox ticked will be imported.

The files will be imported in the order they are listed in the MENU\_LIST.TXT file.

Untick the checkbox for menus that will not be imported.

インポート対象	メニューグループ名	メニュー名	メニューID	ファイル名	エラー内容
<input checked="" type="checkbox"/>	Ansible共通	インターフェース情報	2100040702	Ansibleインターフェース情報_20210709144743.xlsx	
<input checked="" type="checkbox"/>	Ansible共通	Ansible Towerポスター一覧	2100040708	AnsibleTowerポスター一覧_20210709144743.xlsx	
<input checked="" type="checkbox"/>	Ansible共通	グローバル変数管理	2100040706	Ansibleグローバル変数管理_20210709144744.xlsx	
<input checked="" type="checkbox"/>	Ansible共通	収集インターフェース情報	2100040709	収集インターフェース情報_20210709144745.xlsx	
<input checked="" type="checkbox"/>	Ansible共通	収集項目管理	2100040710	収集項目管理_20210709144745.xlsx	

Figure 3-5 Excel bulk import screen(2)

If the following conditions are met, the import process will end up in an error and the checkboxes will be deactivated.

1. If two of the same IDs are specified in the MENU\_LIST.txt file
2. If there are two menus are set to a single file in the MENU\_LIST.txt file
3. If the MENU\_LIST.txt file contains text written in the wrong format
4. If a non-existent menu ID is written in the MENU\_LIST.txt file
5. If a non-existent file is specified in the MENU\_LIST.txt file
6. if there are two items with the same name in different folders in the MENU\_LIST.txt file
7. If the login user doesn't have "can maintain" for the menus the user wants to import.

- (1) After importing, the user will be moved to a confirmation screen. Pressing the "Excel bulk export/import list" button will move the user to the "Excel bulk export/import list" menu where they can see the status of the import process.

Figure 3-6 Excel bulk import screen(3)

### 3.6 Excel bulk export・Import list

Manages the status of export/import processes started in the "excel bulk export/excel bulk import" menu. Only processes started by the logged in user will be displayed.

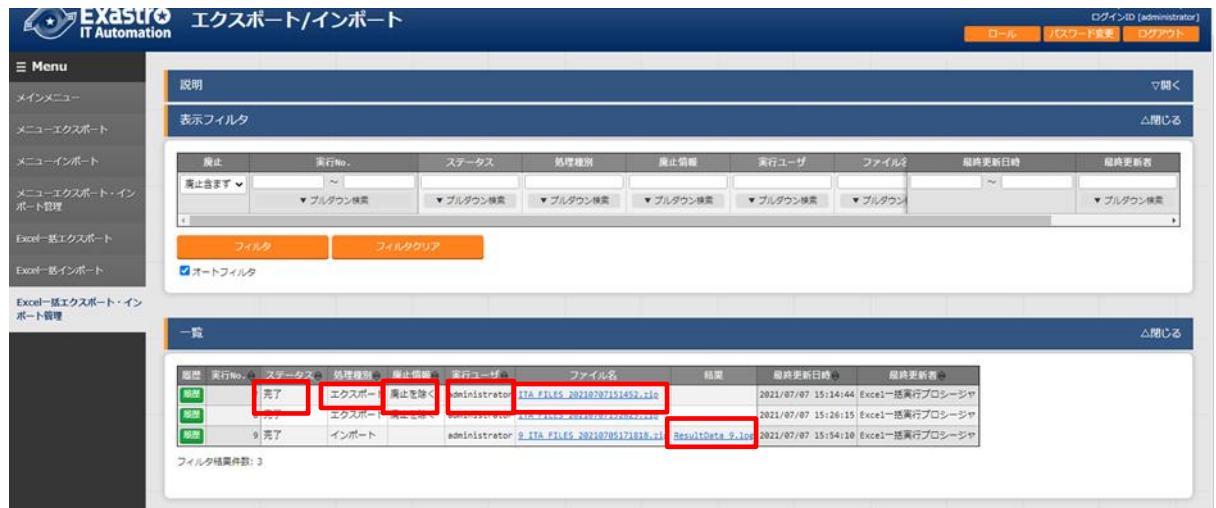


Figure 3-7 Excel bulk export・Import list screen

Table 3-2 Item list(Menu export・Import list)

Item	Description
Execution No.	Auto generated unique number.
Status	Changes in the order of "Unexecuted", "Executing", "Completed". If error occurred during execution, the status will become "Completed (error)".
Process type	export・・・Excel bulk export Import・・・Excel bulk import
Abolished information	Displays what abolished information got imported/exported.
Execution user	Displays the username of the user that started the export/import process.
File name	If the export status says "Completed", the exported data will be displayed in the "File name" column. The file can then be downloaded for further use. Imported data will be displayed in the "File name" column.
Result	Displays a downloadable text file that contains information regarding the import process. The file can then be downloaded for further use.

- (1) The following is an excerpt from an import result file.  
Information for all the imported files will be output.

2100000003\_Basic console:2100000501\_Link menu  
InputFile:AnsibleLinkMenu\_20210708023537.xlsx

Registered: 0  
Updated: 2  
Abolished: 1  
Restored: 1  
Error: 0

2100000002\_ManagementConsole:2100000208\_UserList  
InputFile:User\_20210624111008.xlsx

Registered: 0  
Updated: 0  
Abolished: 0  
Restored: 0  
Error: 1

Line:11 username: must fill the following requirements. (Character limit (Excluding tabs and lines)  
Max:270 bytes/Min:1 byte  
This item is required. (Item:username)

2100000003\_BasicConsole:2100000327\_ERFigureMenuList  
InputFile:ERFigureMenuList\_20210708023538.xlsx  
This menu does not have an excel edit file.